

RadioLogger

User Manual

RadioLogger

Radio recording software

by DJsoft.Net Team

Contents

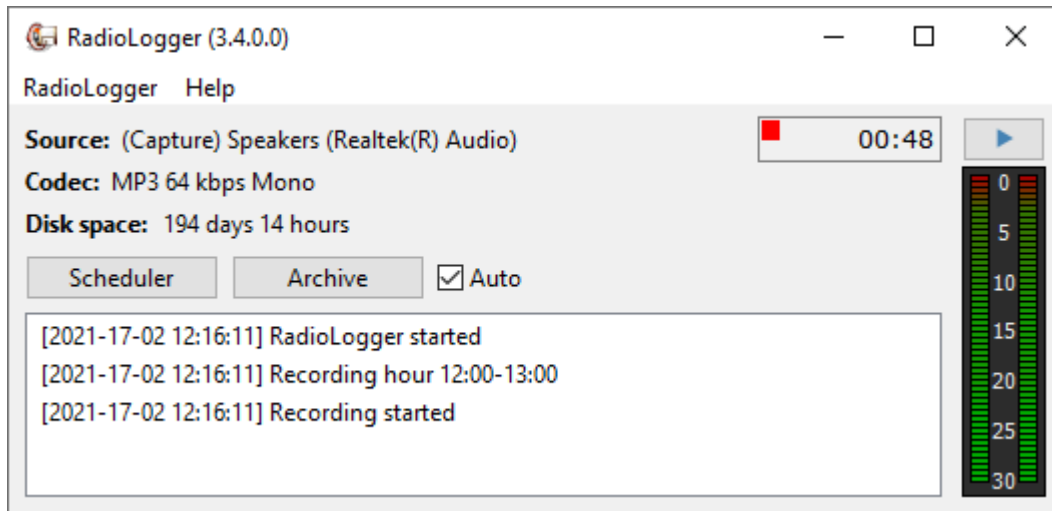
Part I Introduction	4
Part II How to register	7
Part III Quick Start	9
Part IV Operation	12
1 Recording sources.....	13
2 Scheduler	13
3 Archive	15
4 Silence alerts	16
Part V Contacts	18
Index	0

Part

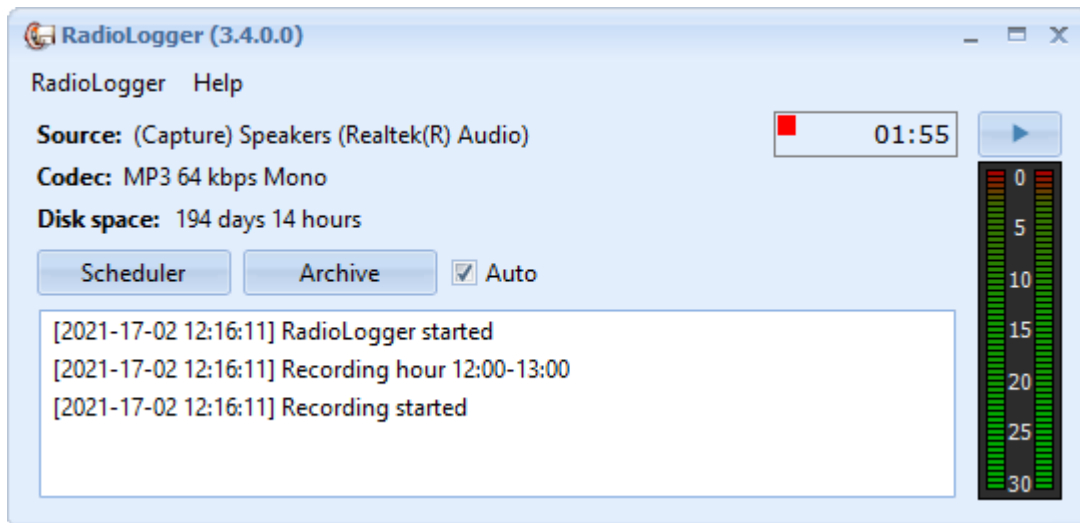


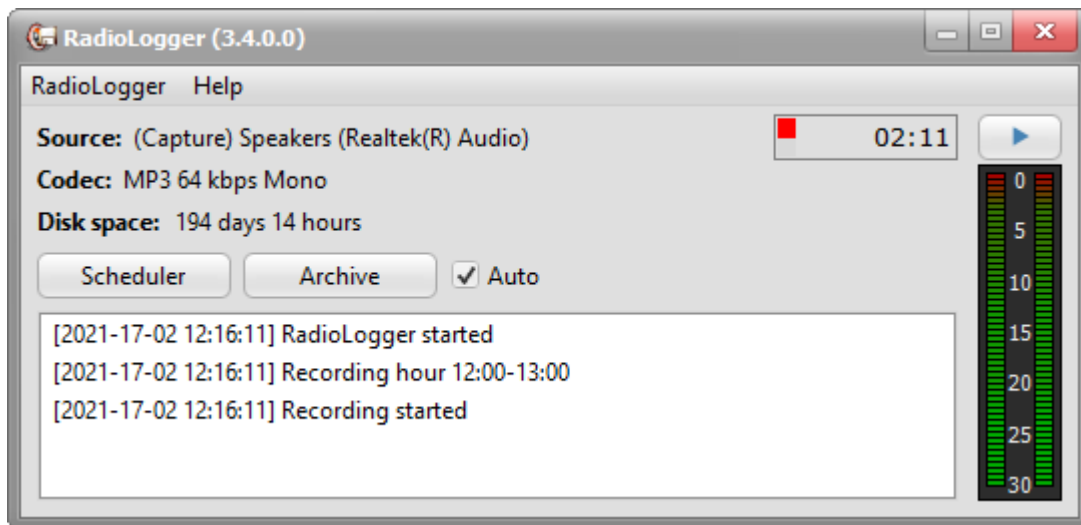
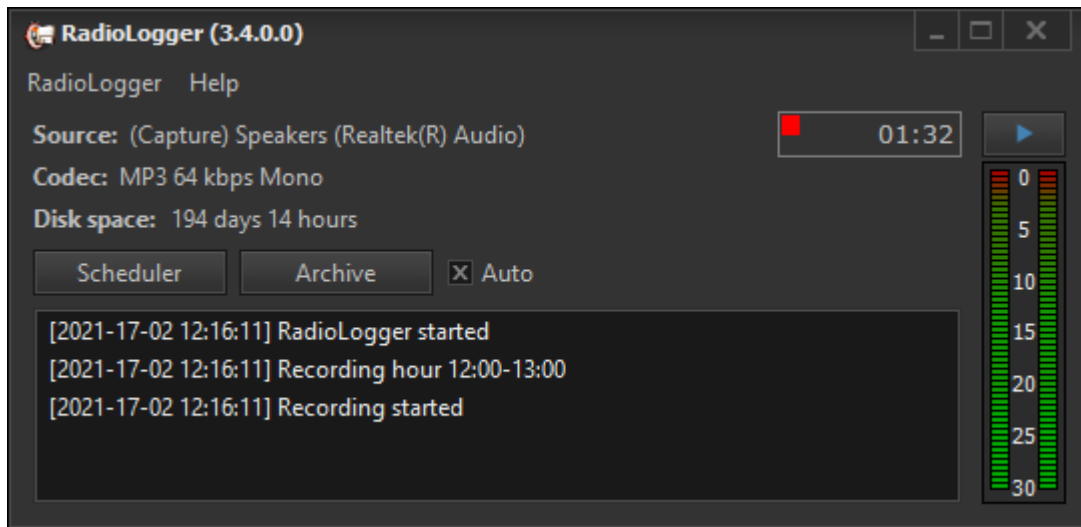
1 Introduction

RadioLogger is a program used to record (archive) radio station broadcast on the computer hard drive. Archiving can be useful for example in disputes with the advertiser as a fact of advertising being broadcast or be useful for various checks. Recording can be performed 24 hours a day or in specified time intervals. The program uses leading sound compression technologies so the created files have very small size.



RadioLogger also supports various styles.

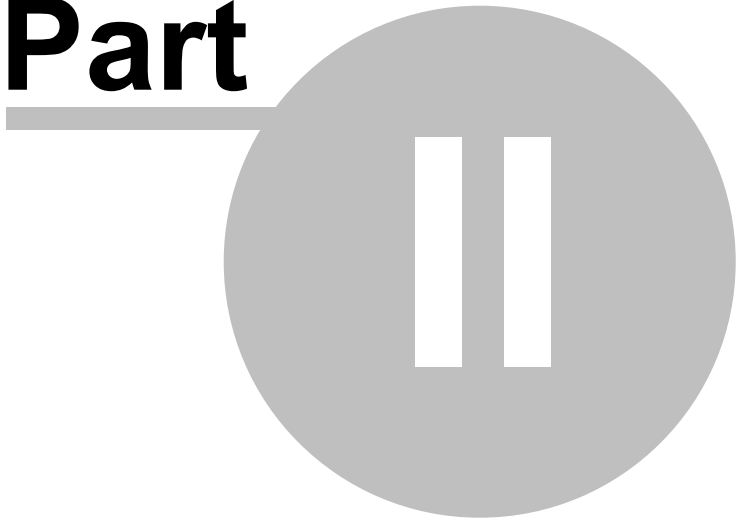




This help file is for RadioLogger 3.4

Copyright (c) 2021 DJSoft.Net. All rights reserved.
RadioLogger is the property of DJSoft.Net and is protected by international copyright law.

Part

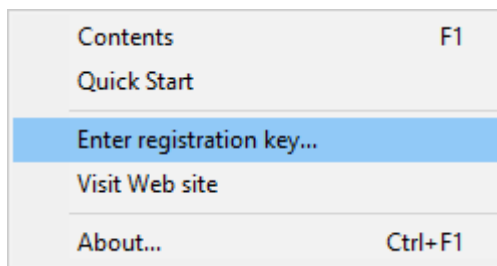


2 How to register

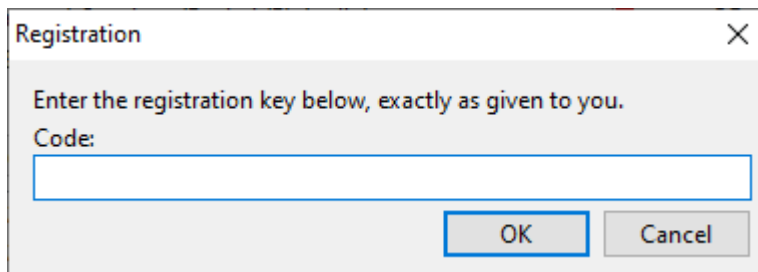
RadioLogger is distributed on a try-before-you-buy basis. You can download a trial version of the application and use it for free during the trial period. To continue using RadioLogger after the trial is over, you must buy a registration key.

To register RadioLogger, follow the steps below:

1. Go to www.djsoft.net and click the **Buy** button.
Once your order is submitted and processed, a message with the registration data will be sent to your email address specified during the registration.
2. Open RadioLogger, and select **Help -> Enter registration key...** in the top menu bar.



3. A dialog prompting you to enter a registration key will open:



4. Enter your registration key. It is advisable to copy and paste the code from the email message.
5. Click **OK**. Now your copy of the application is registered and all limitations are removed.

If you have upgraded your edition, repeat steps 1 to 5 for the changes to take effect.

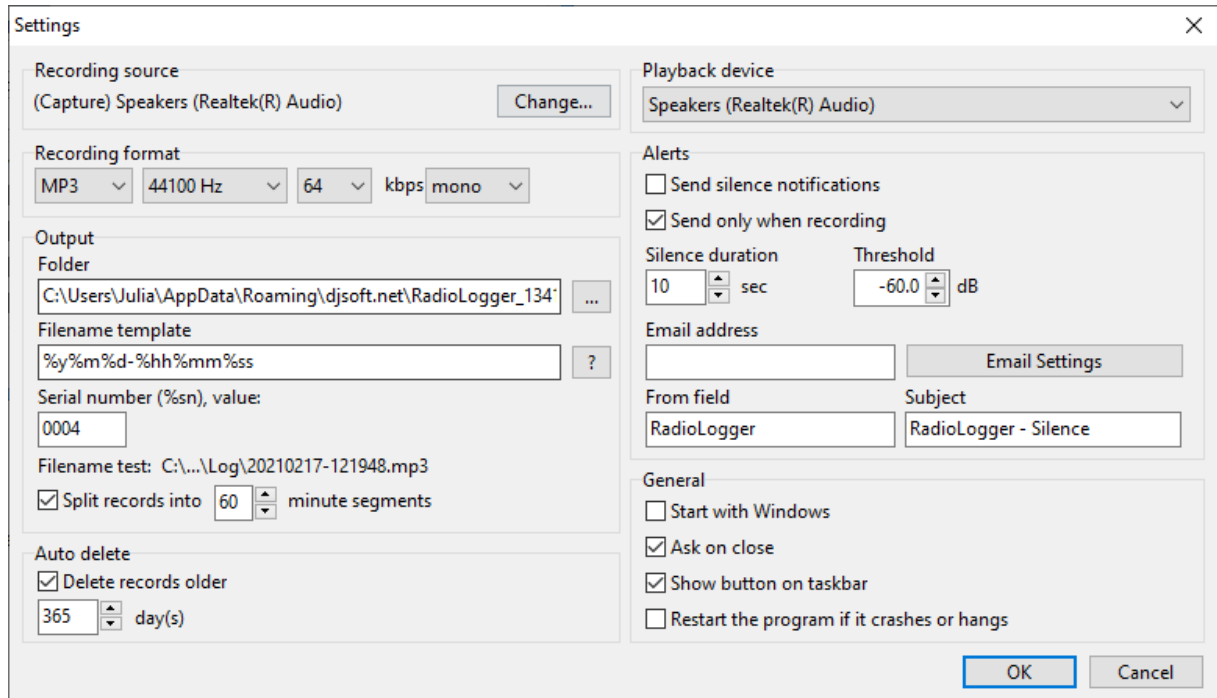
Part



3 Quick Start

This section will help you start working with the program.

1. Start **RadioLogger**.
2. In the top menu click **RadioLogger** -> **Settings...**



3. Select [recording source](#) ¹³.

4. Select the desired **recording format**.

5. Select the **folder** where the files will be saved. This will be the root folder for the recordings. Set the **file name template** using the variables below. The file name template can also include paths, this allows creating folders for different years, months, days.

%y - year
 %m - month
 %d - day
 %hh - hour
 %mm - minute
 %ss - second
 %wd - week day
 %sn - serial number

For instance, the file name can be set as %y\%m\%d-%hh. The "filename test" shows the example of the file name that will be generated using the template.

6. In the [scheduler](#) ¹³, select the hours to record and make sure that you have auto-record turned on: **Auto** is checked in the main window.

7. Records splitting. If "**Split records into**" is enabled, the records will be split into segments after the specified amount of minutes and also at the beginning of the hour. This option is ignored when the recording is started manually by pressing the "Rec" button.

8. If there are no error messages in the log and the recording time is running, the program is set up correctly.

Part



4 Operation

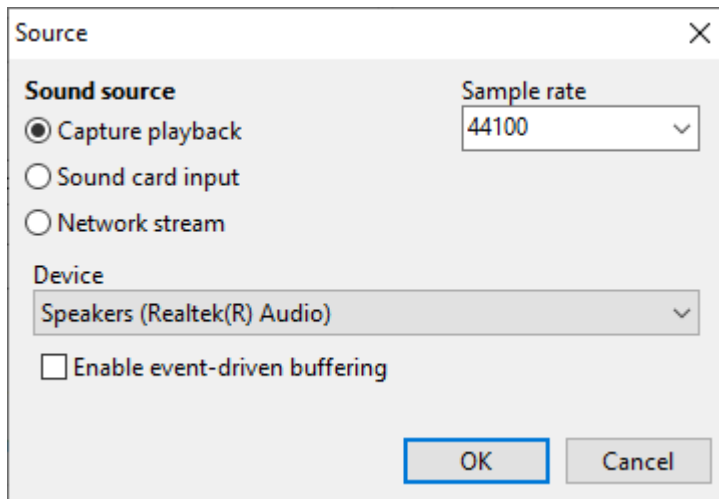
4.1 Recording sources

Configuring the recording source:

Click **RadioLogger** -> **Settings** in the menu.

Click the **Change** button in the **Recording source** category.

The source configuration window will appear:



Select a suitable sound source.

- **Capture playback** - record whatever is being played on the selected sound card.
- **Sound card input** - record from the sound card's input (line-in or microphone).
- **Network stream** - record a network stream. Enter the stream's URL in the URL field.

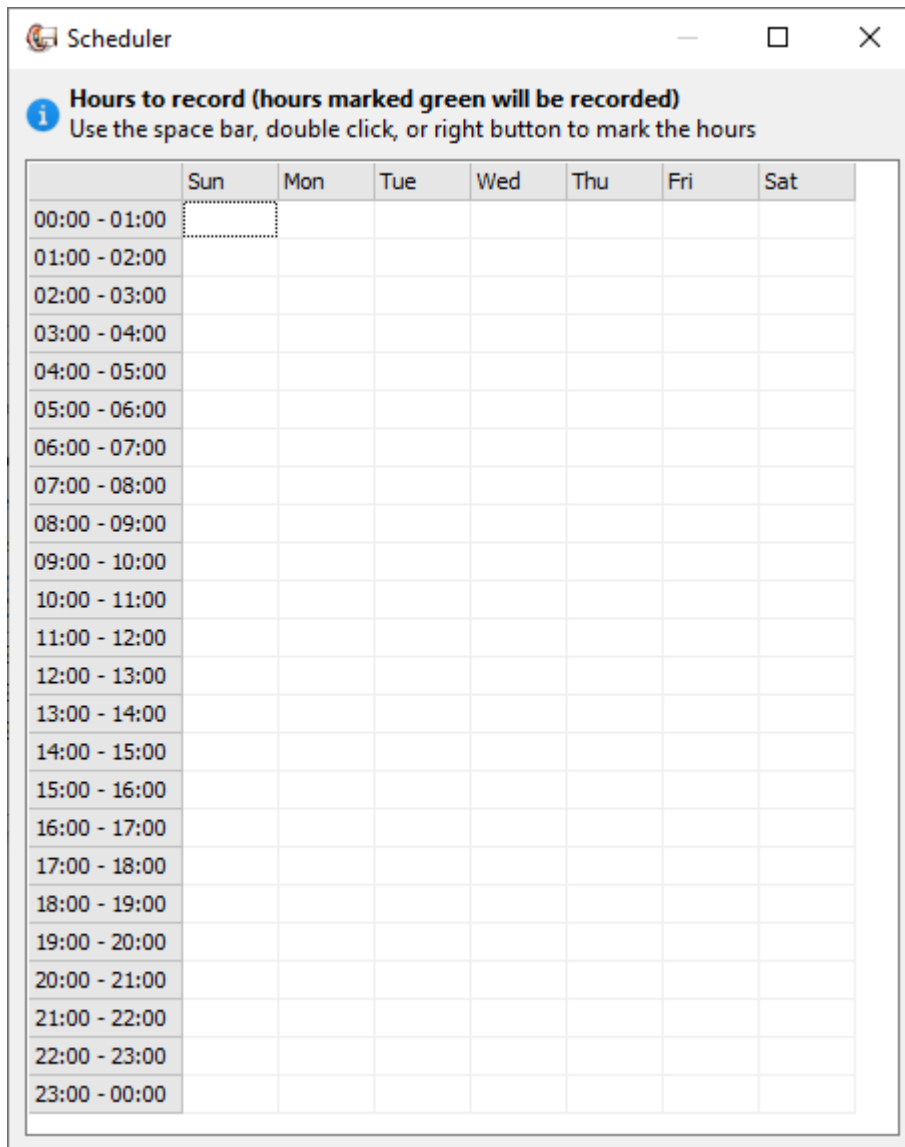
Sample rate - sample rate in Hz, 44100 is the default.

4.2 Scheduler

The scheduler lets you record live broadcasts, including online audio streams, according to a predefined schedule.

To set the recording time, click the **Scheduler** button.

The scheduler window will open:

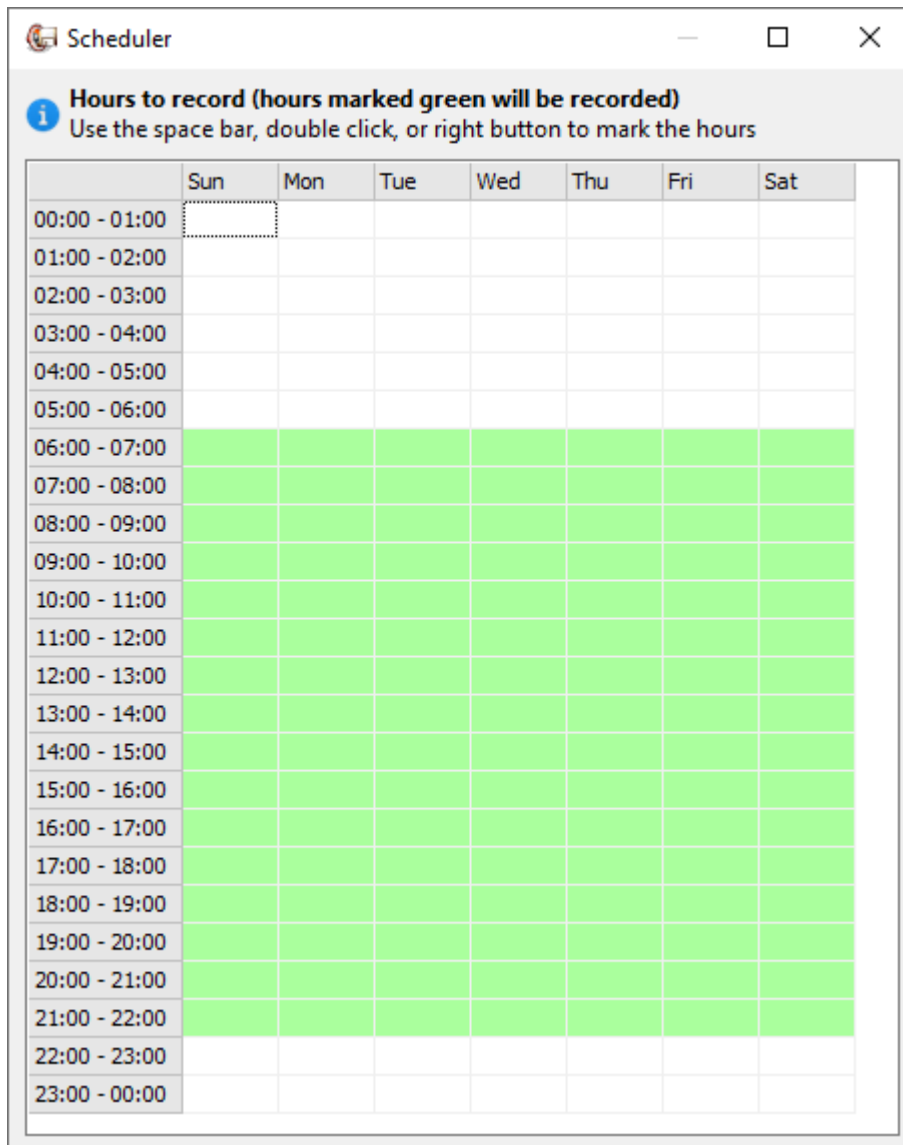


The screenshot shows a window titled "Scheduler" with a standard Windows title bar (minimize, maximize, close buttons). Below the title bar is a header area with an information icon and the text: "Hours to record (hours marked green will be recorded)" and "Use the space bar, double click, or right button to mark the hours". The main area is a grid with 24 rows representing hourly intervals from 00:00 - 01:00 to 23:00 - 00:00. The columns are labeled with days of the week: Sun, Mon, Tue, Wed, Thu, Fri, Sat. The first cell in the first row (00:00 - 01:00) is currently selected, indicated by a dotted border.

	Sun	Mon	Tue	Wed	Thu	Fri	Sat
00:00 - 01:00							
01:00 - 02:00							
02:00 - 03:00							
03:00 - 04:00							
04:00 - 05:00							
05:00 - 06:00							
06:00 - 07:00							
07:00 - 08:00							
08:00 - 09:00							
09:00 - 10:00							
10:00 - 11:00							
11:00 - 12:00							
12:00 - 13:00							
13:00 - 14:00							
14:00 - 15:00							
15:00 - 16:00							
16:00 - 17:00							
17:00 - 18:00							
18:00 - 19:00							
19:00 - 20:00							
20:00 - 21:00							
21:00 - 22:00							
22:00 - 23:00							
23:00 - 00:00							

To set a recording period, select the necessary hours and press space or make a double- or right-click on the selection.

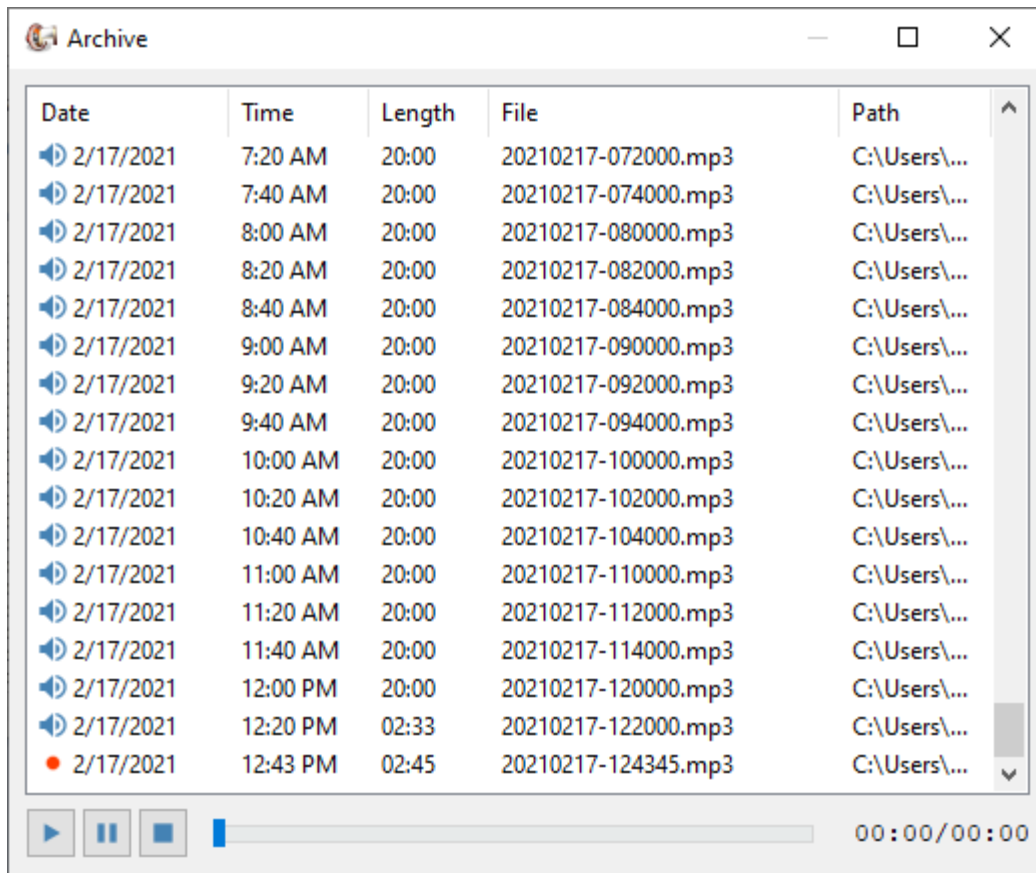
The hours selected for recording will be marked in green.



4.3 Archive

All recordings are stored in the **archive**.

To open the window with the recordings archive, press the **Archive** button in the program.

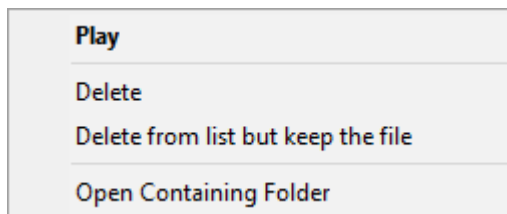


To listen to any recording, press the **Play** button, double-click or click the right mouse on **Play**.

You can:

- **Play**
- **Delete**
- **Delete from list but keep the file**
- **Open Containing Folder**

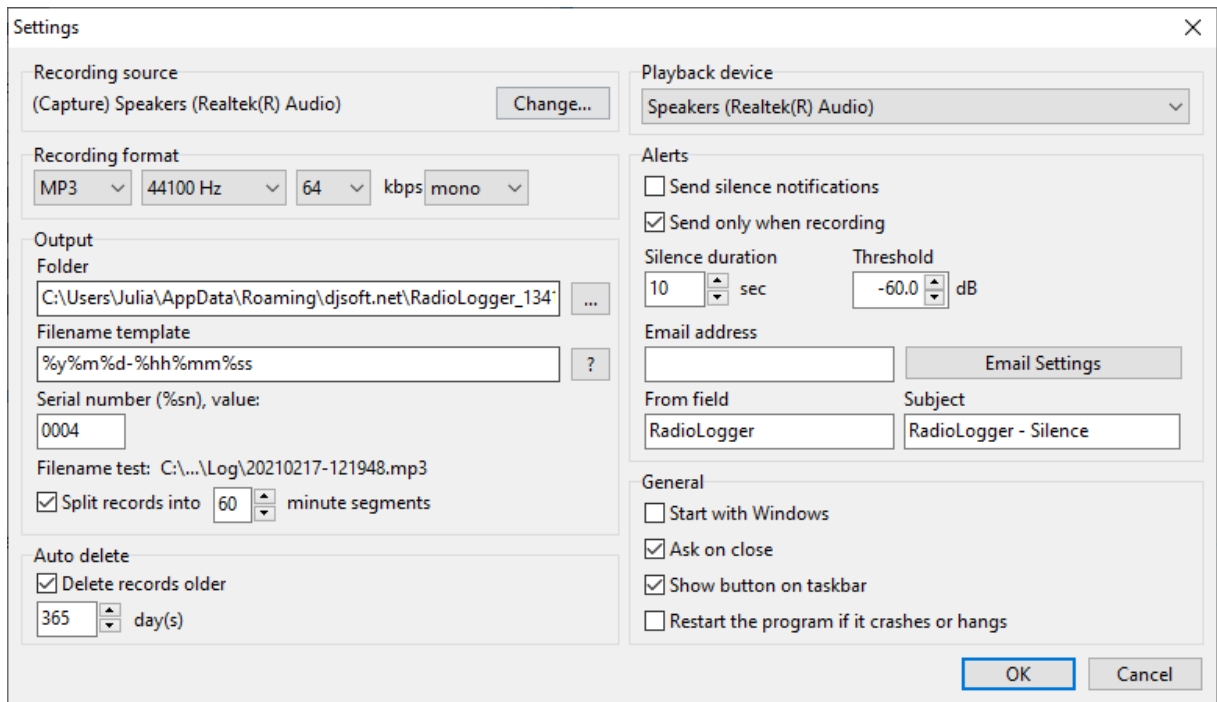
To do this, press the right mouse button on the selected line of the list.



4.4 Silence alerts

You can set up notifications of silence at the source. RadioLogger also sends notifications when audio is returned.

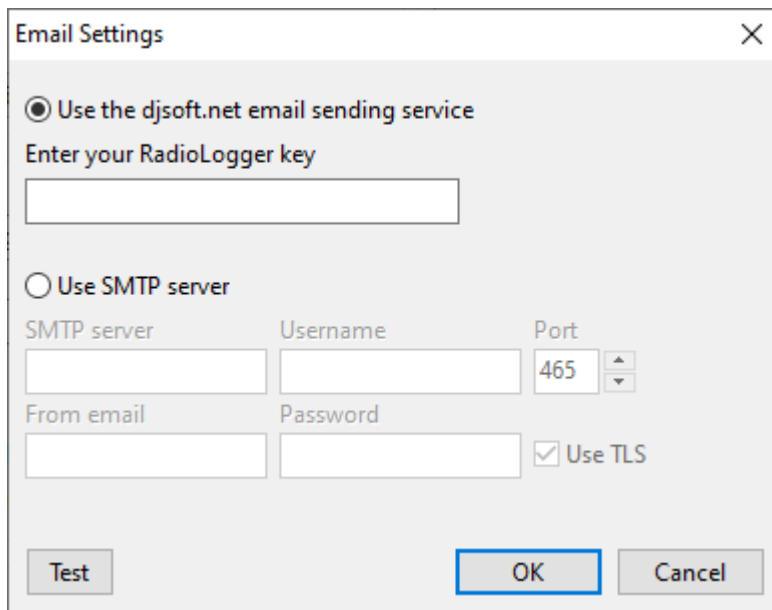
In the top menu click **RadioLogger -> Settings...**



To assign notifications, place a check enable the **Send silence notifications** option. Enable **Send only when recording** to monitor silence only when the recording is active.

Specify the duration of silence, after which the notification should be triggered.

Enter the **e-mail** address you want the notification to go to, enter the subject of the e-mail and from field. Use the **Email Settings** button to configure how the emails are sent.



Part



5 Contacts

If you have questions about RadioLogger, suggestions on how to improve the software, or you found a bug, please visit our support page: <https://www.djsoft.net/enu/support.htm> or forums: <https://www.djsoft.net/forum/>

The latest version of the program can be downloaded from <https://www.djsoft.net>