

# **RadioLogger**

# **User Manual**

# RadioLogger

Radio recording software

---

*by DJsoft.Net Team*

---

# Contents

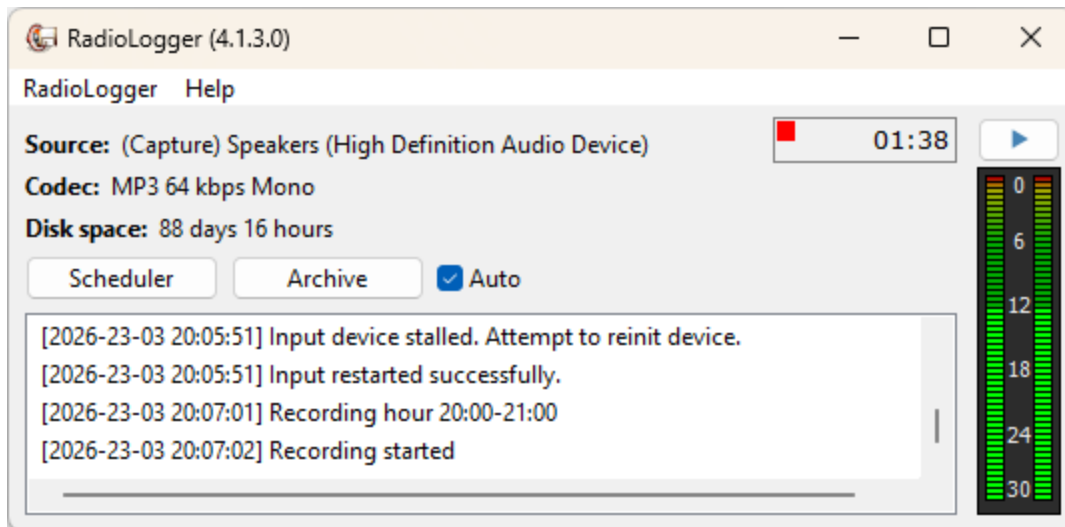
<b>Part I Introduction</b>	<b>4</b>
<b>Part II How to register</b>	<b>7</b>
<b>Part III Getting Started</b>	<b>9</b>
<b>Part IV Operation</b>	<b>12</b>
1 Recording sources.....	13
2 Scheduler.....	13
3 Archive.....	15
4 Silence alerts.....	16
5 Settings window.....	18
6 Recording multiple channels.....	19
<b>Part V Contacts</b>	<b>20</b>
<b>Index</b>	<b>0</b>

**Part**

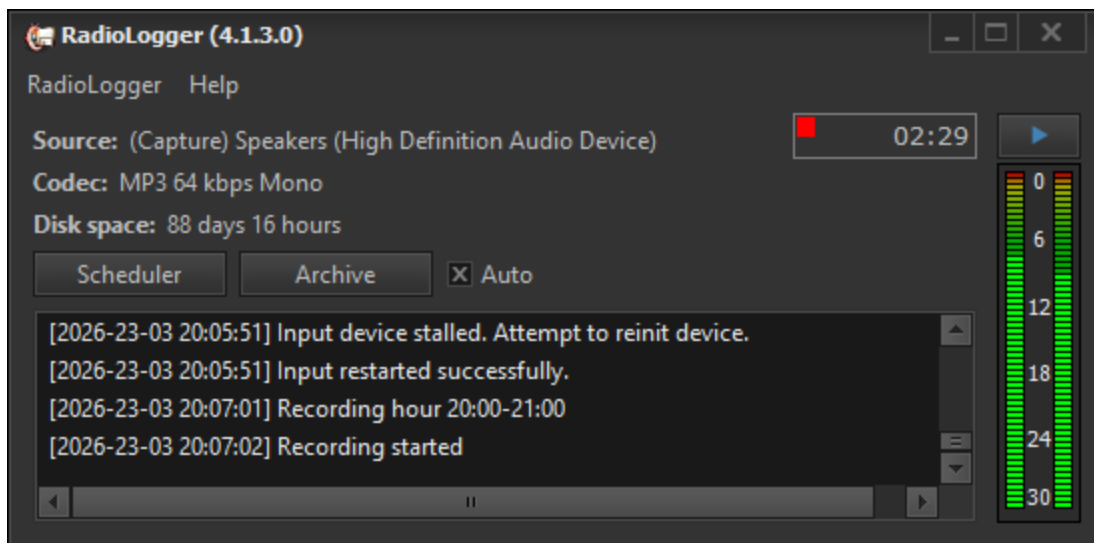


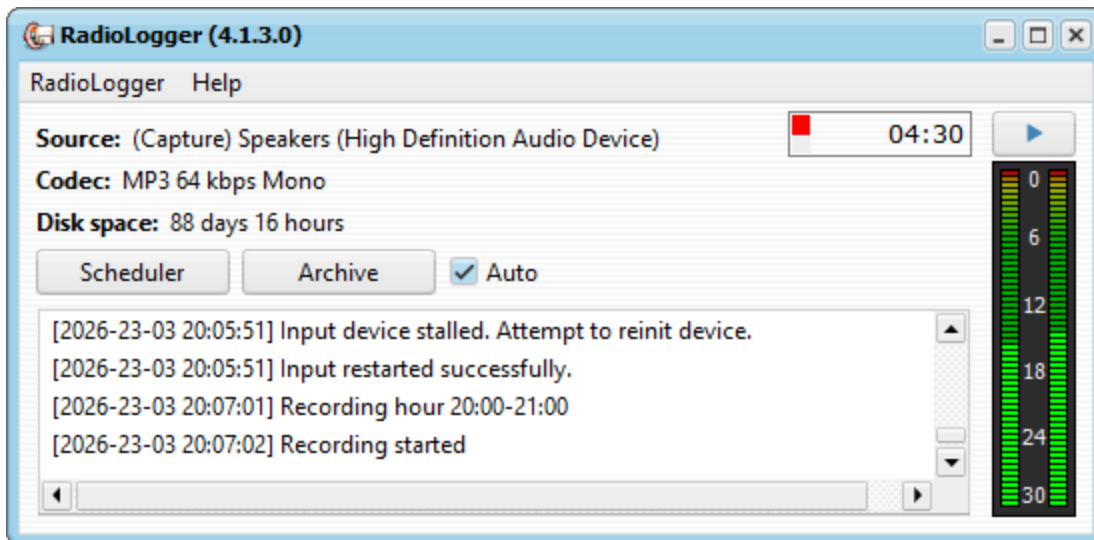
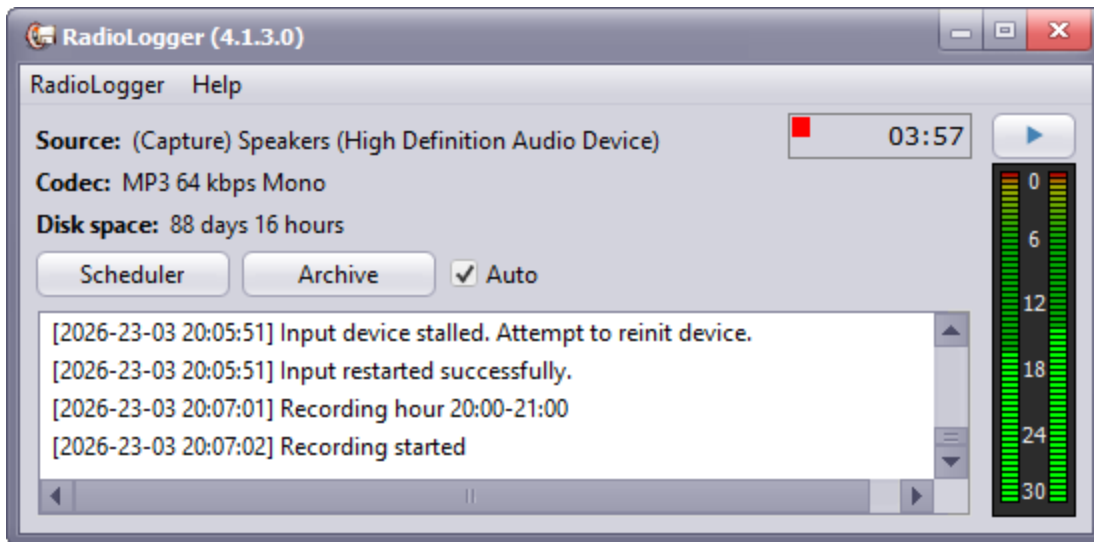
# 1 Introduction

**RadioLogger** is a program used to record (archive) a radio station's broadcast on the computer's hard drive. Archiving can be useful, for example, in disputes with the advertiser to prove that advertising was broadcast, or for various checks (e.g., silence). Recording can be performed 24 hours a day or in specified time intervals. The program uses leading sound compression technologies, so the resulting files are very small.



RadioLogger also supports various styles.



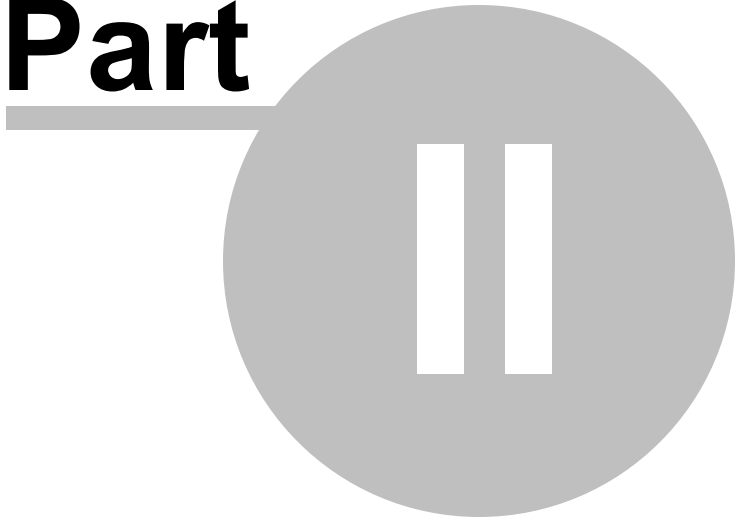


This help file is for RadioLogger 4.1

---

Copyright (c) 2026 [DJSoft.Net](http://DJSoft.Net). All rights reserved.  
RadioLogger is the property of DJSoft.Net and is protected by international copyright law.

**Part**



## 2 How to register

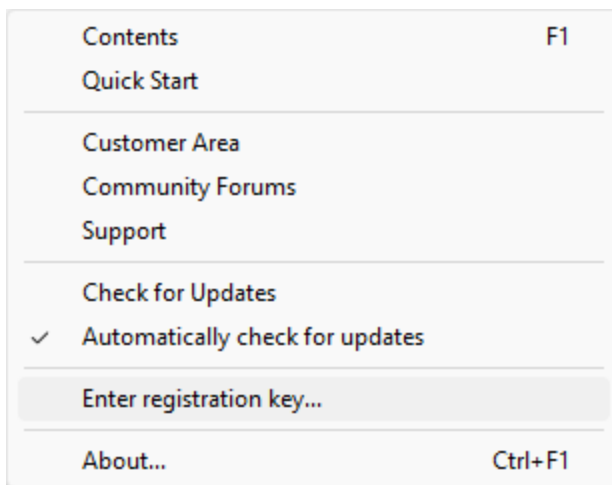
RadioLogger is distributed on a try-before-you-buy basis. You can download a trial version of the application and use it for free during the trial period. To continue using RadioLogger after the trial ends, you must purchase a registration key.

**To register RadioLogger, follow the steps below:**

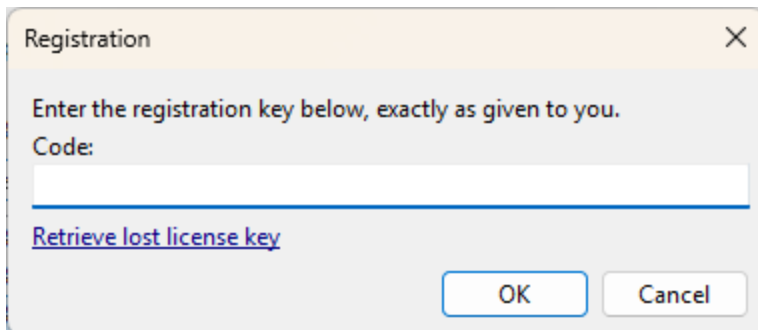
1. Go to [www.djsoft.net](http://www.djsoft.net) and click the **Buy** button.

Once your order is submitted and processed, a message with the registration data will be sent to your email address specified during registration.

2. Open RadioLogger, and select **Help -> Enter registration key...** in the top menu bar.



3. A dialog prompting you to enter a registration key will open:

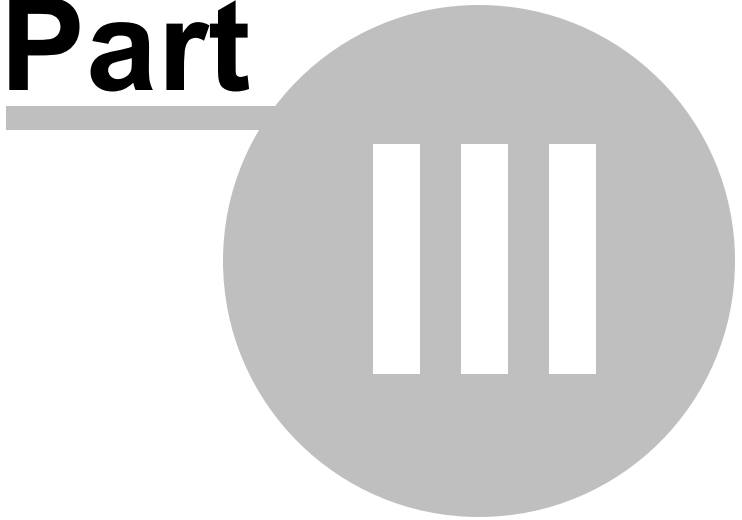


4. Enter your registration key. It is advisable to copy and paste the code from the email message.

5. Click **OK**. Your copy of the application is now registered, and all limitations have been removed.

If you have upgraded your edition, repeat steps 1 to 5 for the changes to take effect.

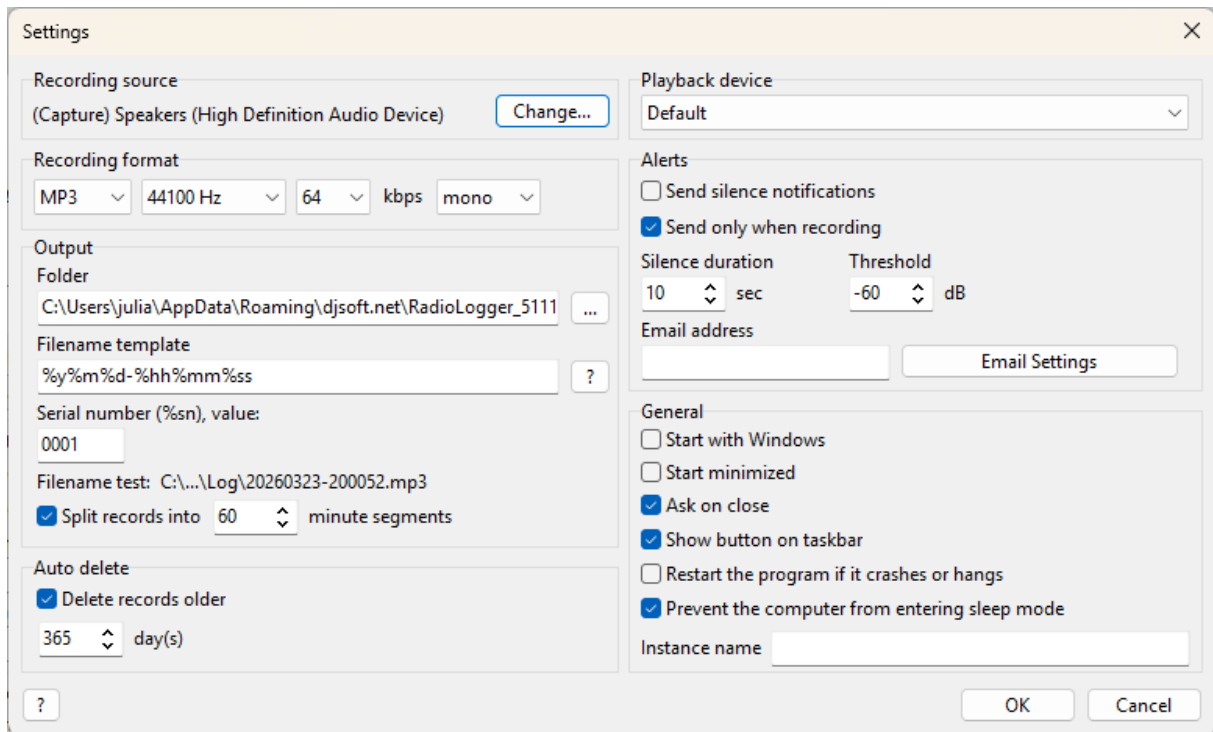
**Part**



### 3 Getting Started

This section will help you start working with the program.

1. Start **RadioLogger**.
2. If needed, enable improved accessibility by checking **RadioLogger** → **Accessibility (Screen Reader)** in the menu.
3. In the top menu, click **RadioLogger** -> **Settings...**



4. Select the [recording source](#) <sup>13</sup>.
5. Select the desired **recording format**.
6. Select the **folder** where the files will be saved. It will be the root folder for the recordings. Set the **file name template** using the variables below. The file name template can include paths, allowing the creation of folders for different years, months, and days.

%y – year  
 %m – month  
 %d – day  
 %hh – hour  
 %mm – minute  
 %ss – second  
 %wd – week day  
 %sn – serial number

---

For instance, the file name can be set as %y%\%m\%d-%hh. The "filename test" shows an example of the file name generated using the template.

7. In the [scheduler](#)<sup>[13]</sup>, select the hours to record. Ensure the **Auto** checkbox is checked in the main window (this enables automatic recording to start and stop according to the schedule).

8. Records splitting. If "**Split records into ... minute segments**" is enabled, the records will be split into segments after the specified number of minutes and at the beginning of the hour. This option is ignored when the recording is started manually by pressing the "Rec" button.

9. If the log does not contain error messages and the recording time is running, the program is set up correctly.

**Part**



## 4 Operation

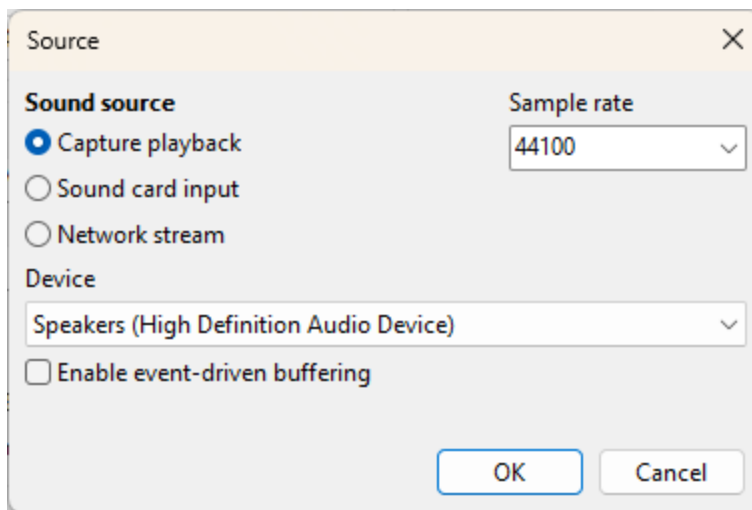
### 4.1 Recording sources

Configuring the recording source:

Click **RadioLogger** -> **Settings** in the menu.

Click the **Change** button in the **Recording source** category.

The source configuration window will appear:



Select a suitable sound source.

- **Capture playback** – record whatever is playing on the selected sound card.
- **Sound card input** – record from the sound card's input (line-in or microphone).
- **Network stream** – record a network stream. Enter the stream's URL in the URL field.

**Sample rate** – sample rate in Hz, 44100 is the default.

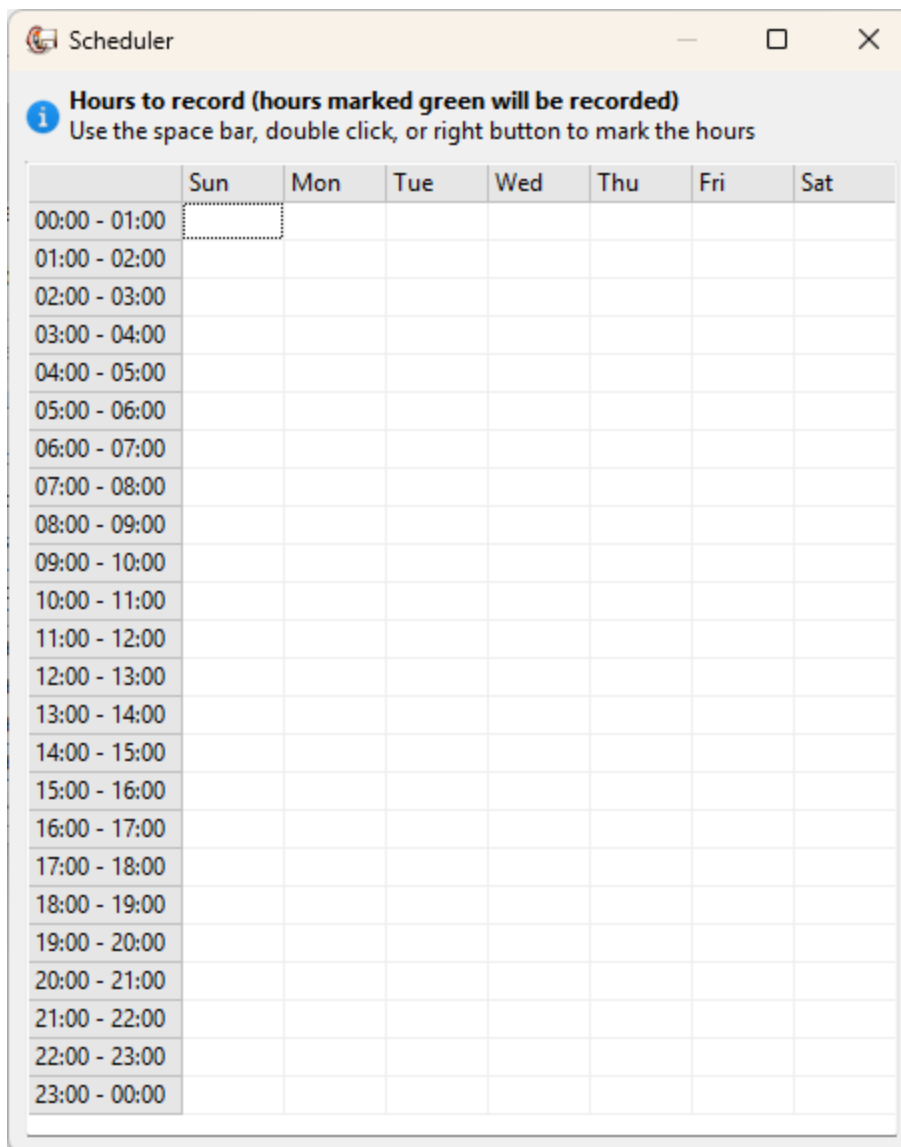
### 4.2 Scheduler

The scheduler lets you record live broadcasts, including online audio streams, according to a predefined schedule.

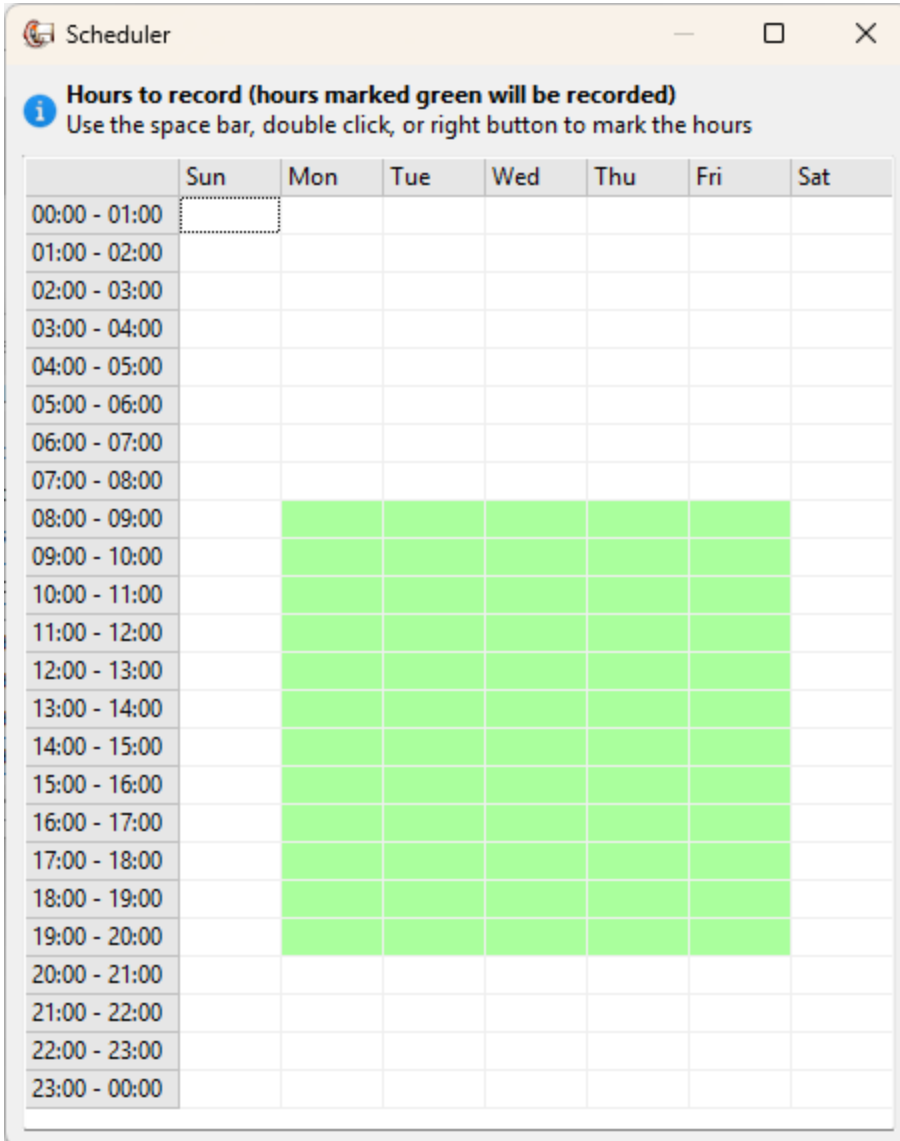
Ensure the **Auto** checkbox is checked in the main window (this enables automatic recording to start and stop according to the schedule).

To set the recording time, click the **Scheduler** button.

The scheduler window will open:



To set a recording period, select the required hours and press Space or right-click the selection. The hours selected for recording will be marked in green.



**Scheduler**

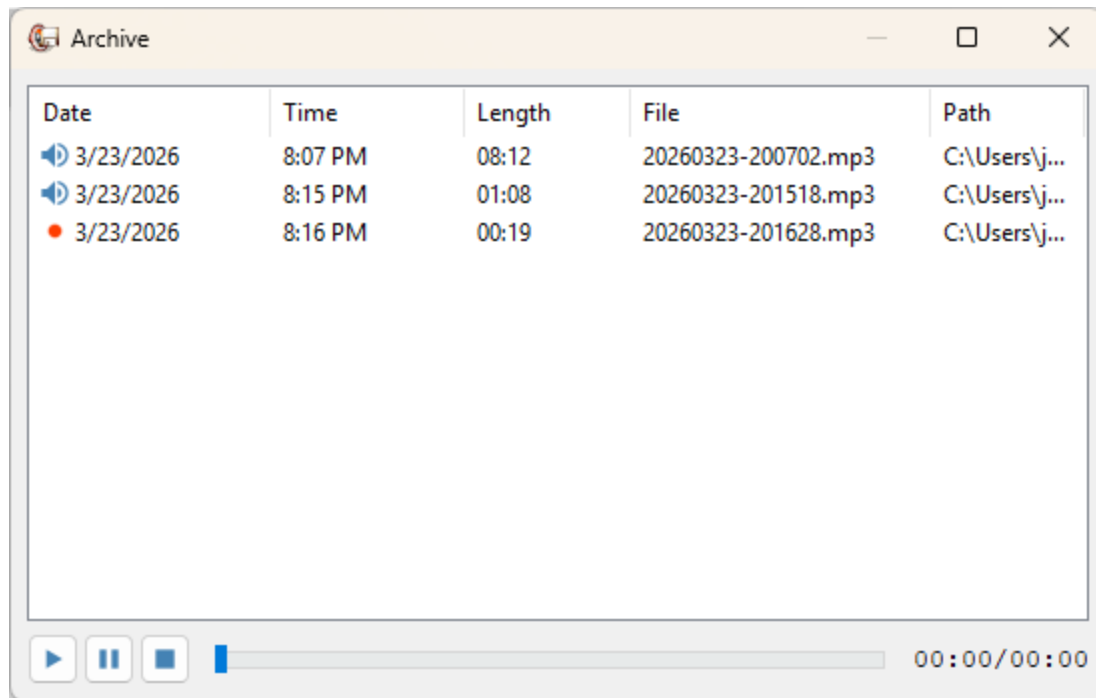
**Hours to record (hours marked green will be recorded)**  
Use the space bar, double click, or right button to mark the hours

	Sun	Mon	Tue	Wed	Thu	Fri	Sat
00:00 - 01:00							
01:00 - 02:00							
02:00 - 03:00							
03:00 - 04:00							
04:00 - 05:00							
05:00 - 06:00							
06:00 - 07:00							
07:00 - 08:00							
08:00 - 09:00		Green	Green	Green	Green	Green	
09:00 - 10:00		Green	Green	Green	Green	Green	
10:00 - 11:00		Green	Green	Green	Green	Green	
11:00 - 12:00		Green	Green	Green	Green	Green	
12:00 - 13:00		Green	Green	Green	Green	Green	
13:00 - 14:00		Green	Green	Green	Green	Green	
14:00 - 15:00		Green	Green	Green	Green	Green	
15:00 - 16:00		Green	Green	Green	Green	Green	
16:00 - 17:00		Green	Green	Green	Green	Green	
17:00 - 18:00		Green	Green	Green	Green	Green	
18:00 - 19:00		Green	Green	Green	Green	Green	
19:00 - 20:00		Green	Green	Green	Green	Green	
20:00 - 21:00							
21:00 - 22:00							
22:00 - 23:00							
23:00 - 00:00							

### 4.3 Archive

All recordings are stored in the **archive**.

To open the recordings archive, press the **Archive** button in the program.

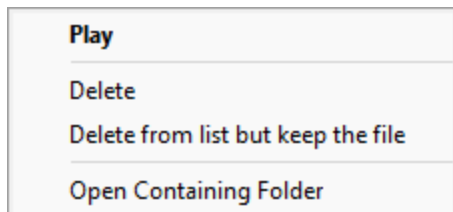


To listen to any recording, press the **Play** button, double-click, or use the right-click menu.

You can:

- **Play**
- **Delete**
- **Delete from the list, but keep the file**
- **Open Containing Folder**

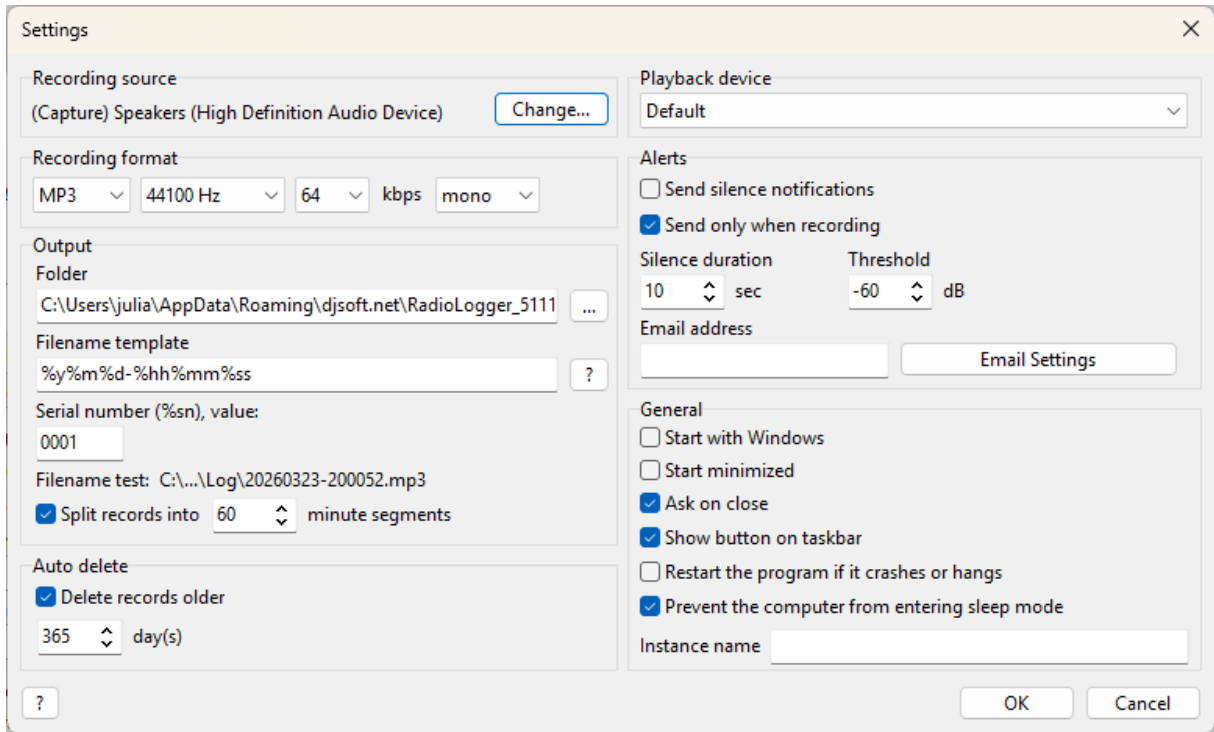
To do this, press the right mouse button on the selected line of the list.



## 4.4 Silence alerts

You can set up notifications of silence at the source. RadioLogger also sends notifications when audio is returned.

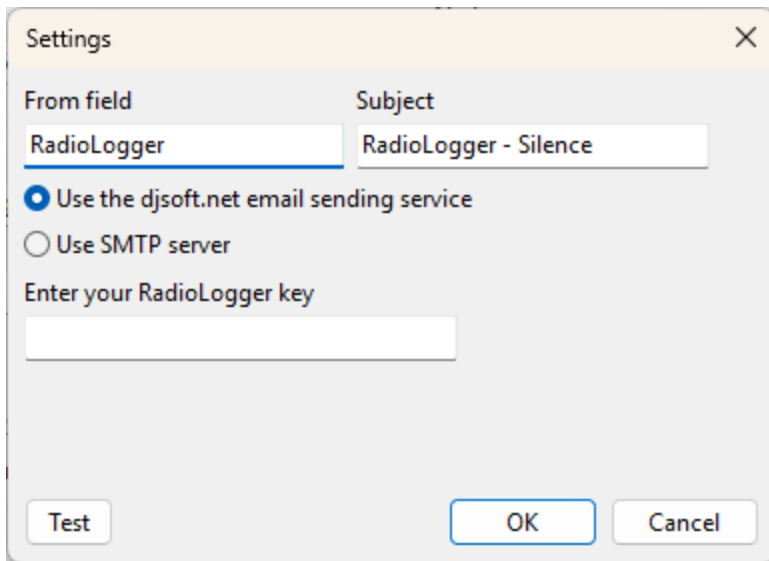
In the top menu, click **RadioLogger -> Settings...**



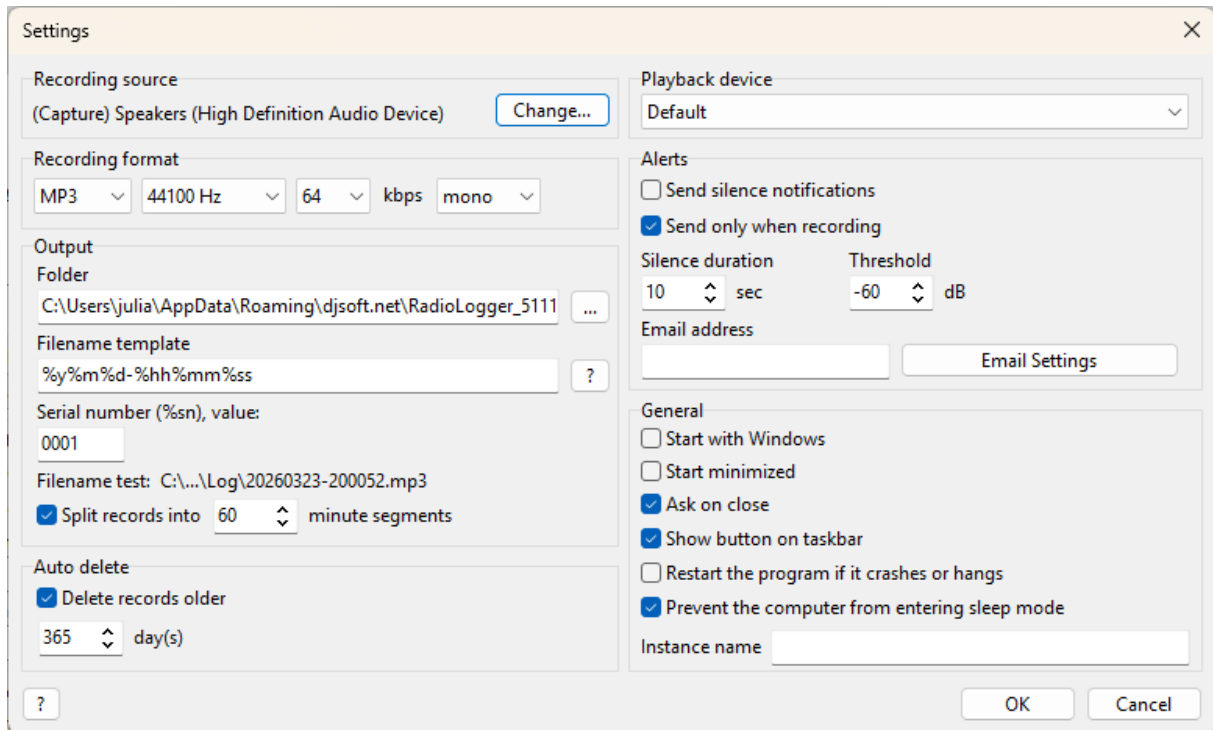
To assign notifications, select the **Send silence notifications** option. Enable **Send only when recording** to monitor silence only when the recording is active.

Specify the duration of silence, after which the notification should be triggered.

Enter the **e-mail** address you want the notification to go to, enter the subject of the e-mail, and the from field. Use the **Email Settings** button to configure how the emails are sent.



## 4.5 Settings window



**Recording source** – select the [recording source](#) <sup>13</sup>.

**Recording format** – select the format in which RadioLogger will record. The higher the bitrate, the more disk space is required to store the recordings.

### Output

**Folder** – select the folder where the recordings will be stored (no macro like **%m** can be used in this field!)

**Filename template** – select the file name template; it can also include slashes (“\”) to create subfolders. E.g., %y\%m\%d-%hh%mm%ss will create a subfolder with the current year, inside it a subfolder with the month, and then a file(s) will be created for each day.

#### Template variables:

- %y – year
- %m – month
- %d – day
- %hh – hour
- %mm – minute
- %ss – second
- %wd – weekday
- %sn – serial number

**Serial number** – specify the value for the **%sn** template variable. The serial number is automatically incremented by 1 each time a new recording starts.

**Split records into** – split recordings into specified minute segments.

- If this option is checked, the records will also be split at the beginning of each hour.
- If this option is unchecked, it will record continuously according to the [scheduler](#)<sup>[13]</sup>.

### Auto delete

Enable this option to automatically delete old records (specify the number of days).

**Playback device** – specify the playback device to be used when you play recordings from the [Archive](#)<sup>[15]</sup> window or use Prelisten.

**Alerts** – configure silence notifications to email.

### General

**Start with Windows** – start RadioLogger when the Windows user logs in.

**Ask on close** – confirm when closing RadioLogger.

**Show button on the taskbar** – if disabled, RadioLogger will be available as a system tray icon.

**Restart the program if it crashes or hangs** – automatically restart RadioLogger if it crashes.

**Prevent the computer from entering sleep mode** – if this is enabled, the computer will not enter sleep mode when RadioLogger is running.

**Instance name** – instance name to identify RadioLogger installation; it's displayed in the title bar.

## 4.6 Recording multiple channels

If you manage multiple radio channels or stations, you might find it useful to record each channel or station separately. By default, RadioLogger records one audio source at a time. If you need to record multiple channels, you can do so by installing RadioLogger multiple times in different folders.

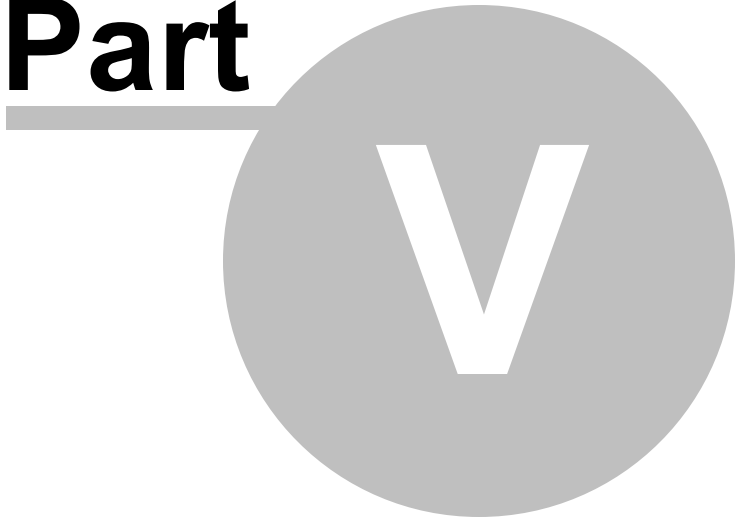
Before installing additional instances, you should rename your RadioLogger desktop shortcut to prevent it from being overwritten by the installer.

Steps to install additional instances:

1. Run the RadioLogger installer.
2. When prompted to choose an installation directory, select a new folder (e.g., C:\Program Files\RadioLogger2, C:\Program Files\RadioLogger3, etc.).
3. Complete the installation process.
4. Rename the newly created "RadioLogger" shortcut on your desktop (e.g., "RadioLogger2").

Once you have multiple instances installed, you'll need to configure each one to record a different channel, see [Getting Started](#)<sup>[10]</sup>.

**Part**



---

## 5 Contacts

If you have questions about RadioLogger, suggestions on how to improve the software, or you found a bug, please visit our support page: <https://www.djsoft.net/enu/support.htm> or forums: <https://www.djsoft.net/forum/>

The latest version of the program can be downloaded from <https://www.djsoft.net>